

# **2025 COLUMBIA GORGE ANNUAL ECONOMIC SYMPOSIUM**

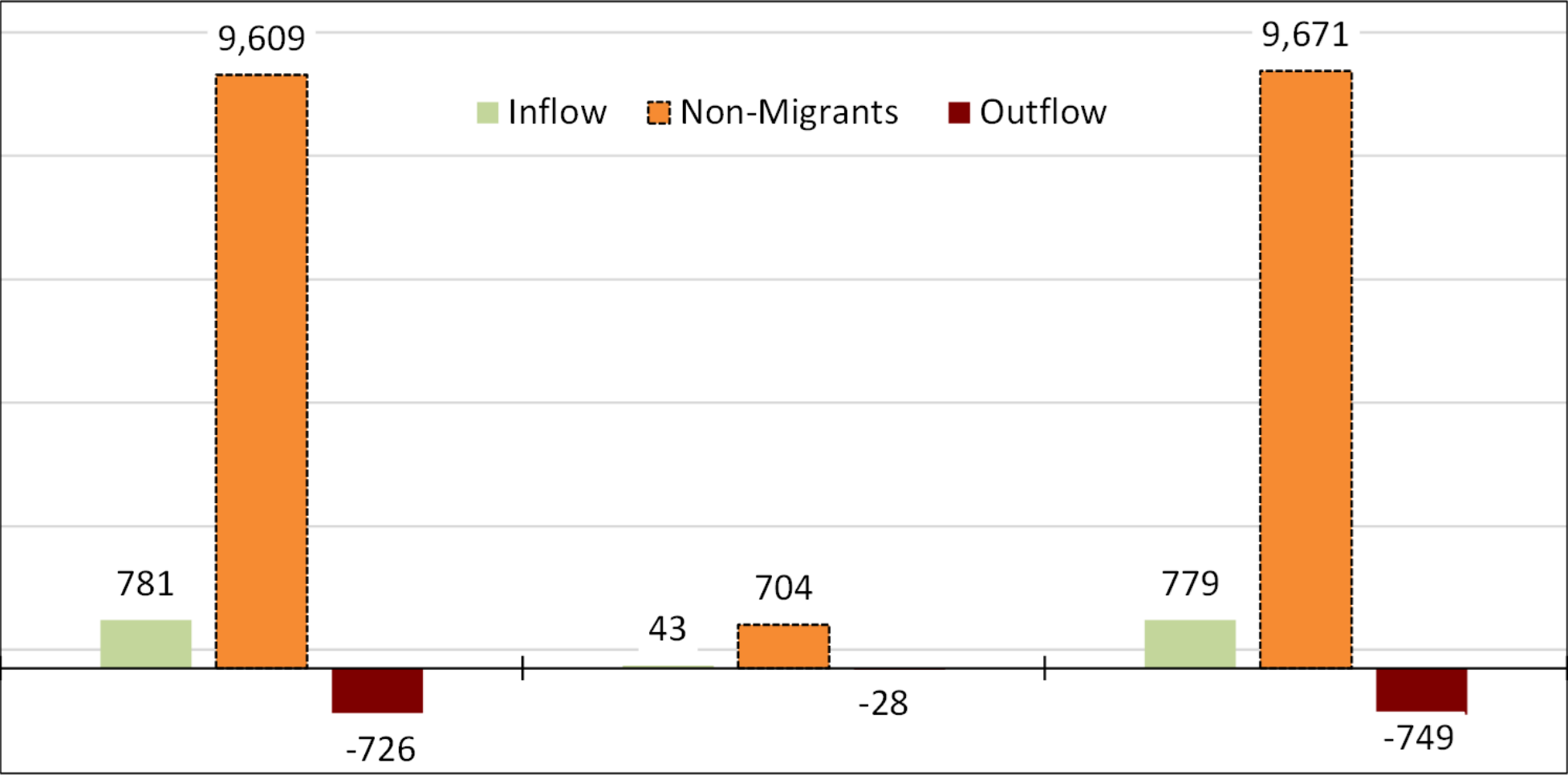
**THE RUINS, HOOD RIVER**

**NOVEMBER 7, 2025**

# COLUMBIA GORGE

2022 IRS Migration Data  
2022 OnTheMap Inflows and Outflows  
Population Research Center 2024 Annual  
Population Report Tables

Number of Returns: Migrants and Non-Migrants in 2022



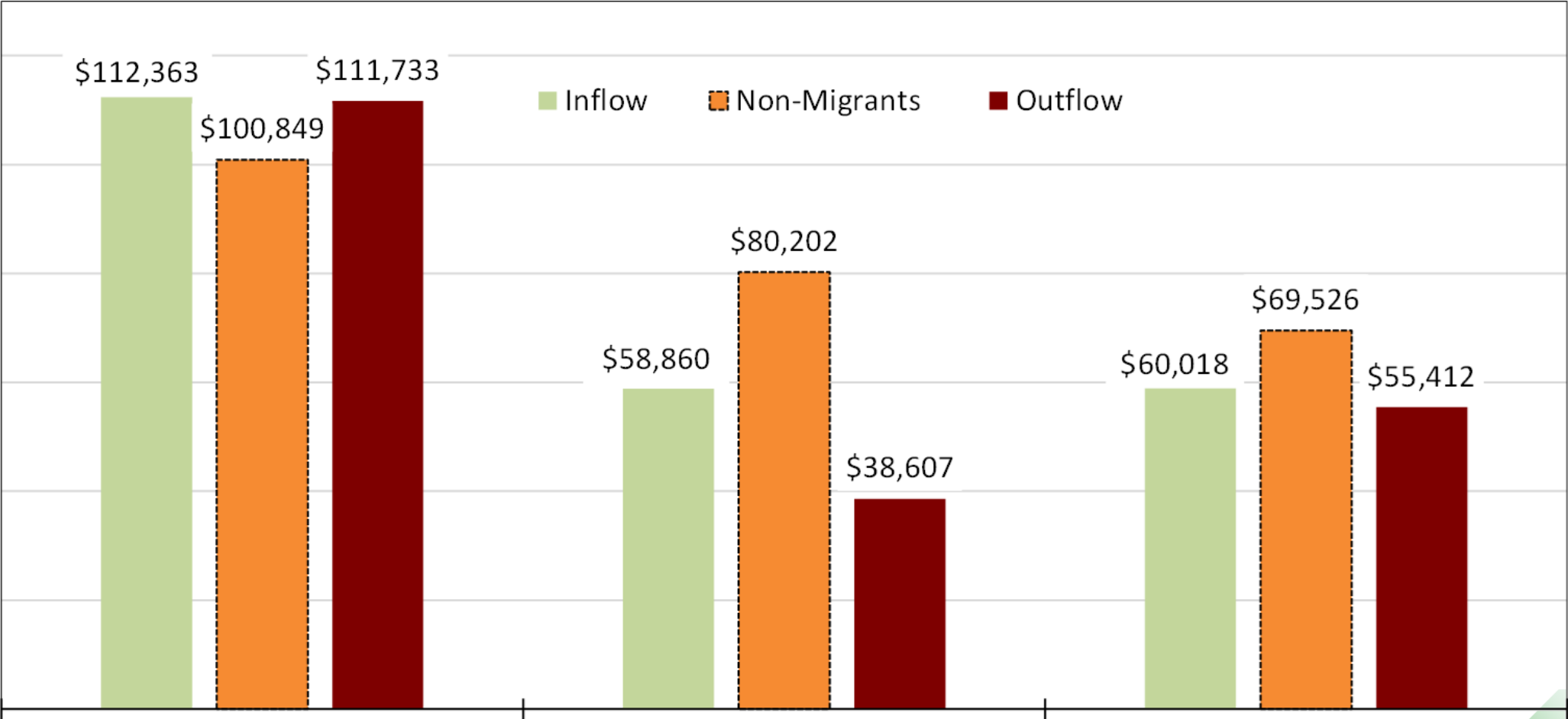
Wasco

Sherman

Hood River

Source: Oregon Employment Department and Internal Revenue Service "SOI tax stats - Migration data 2021–2022."

Average Adjusted Gross Income Per Number of Returns for Migrants and Non-Migrants in 2022



Hood River

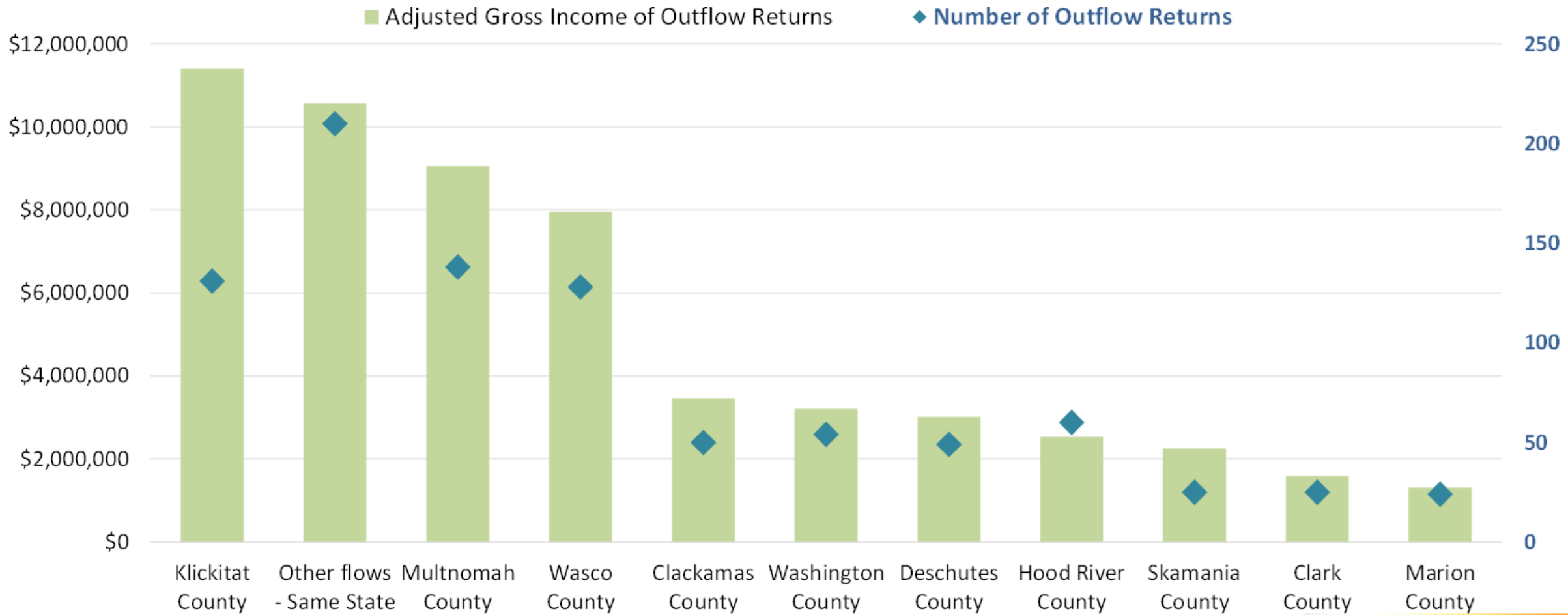
Sherman

Wasco

Source: Oregon Employment Department and Internal Revenue Service "SOI tax stats - Migration data 2021–2022."

# COLUMBIA GORGE 2022 IRS MIGRATION DATA – OUTFLOWING DESTINATIONS

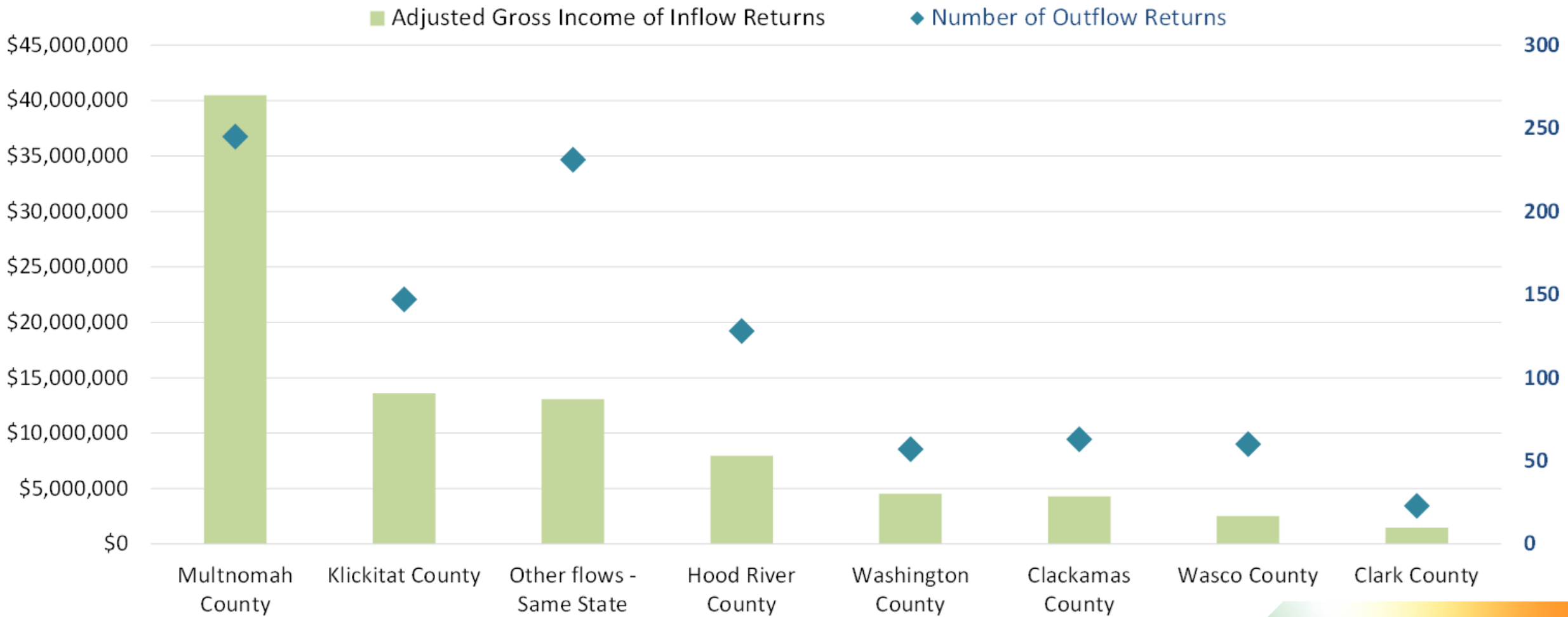
Adjusted Gross Income and Number of Outflowing Returns by Destination



Source: Oregon Employment Department and Internal Revenue Service "SOI tax stats - Migration data 2021–2022."

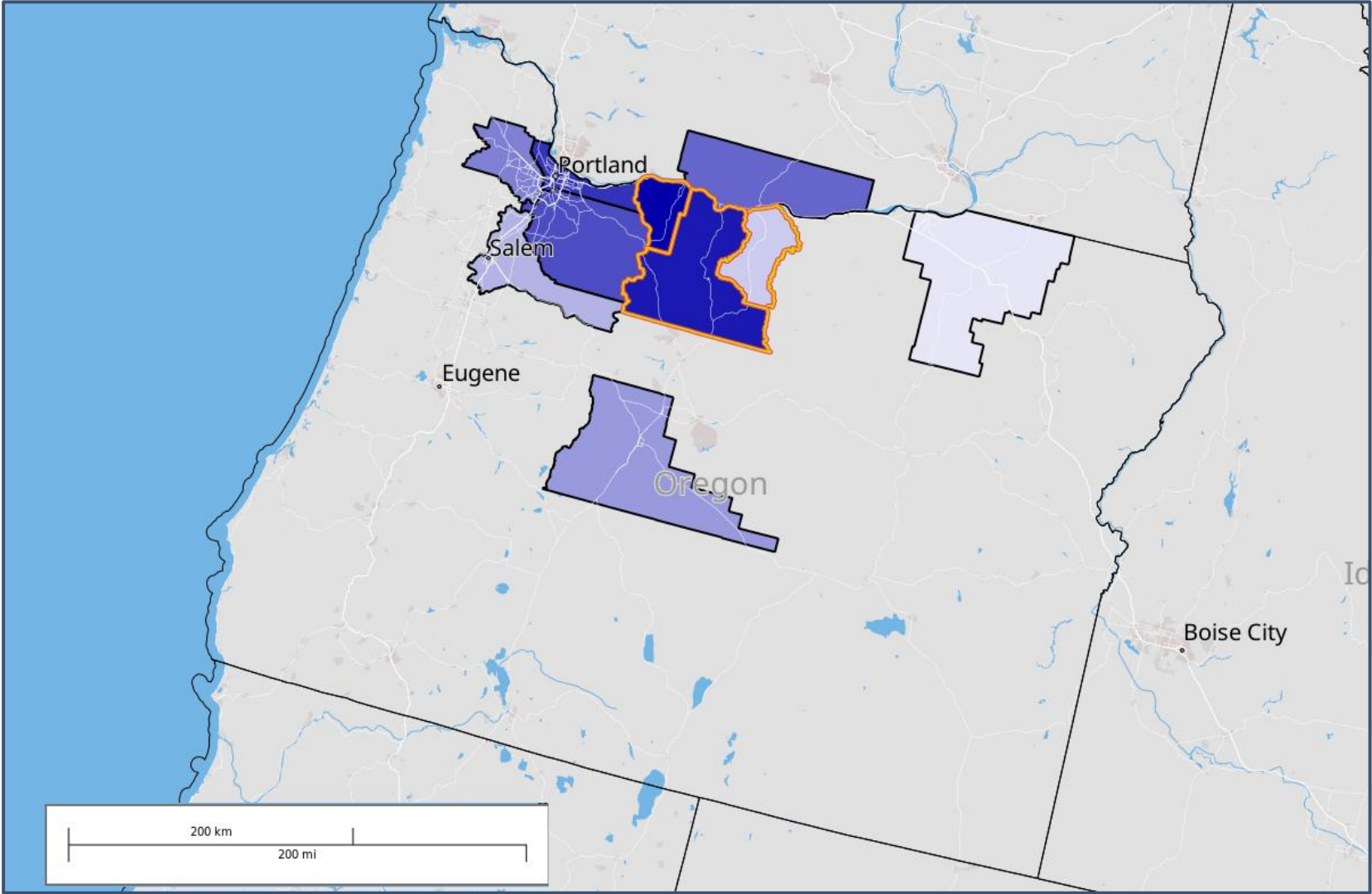
# COLUMBIA GORGE 2022 IRS MIGRATION DATA – INFLOWING ORIGIN

Adjusted Gross Income and Number of Inflowing Returns by Origin



Source: Oregon Employment Department and Internal Revenue Service "SOI tax stats - Migration data 2021–2022."

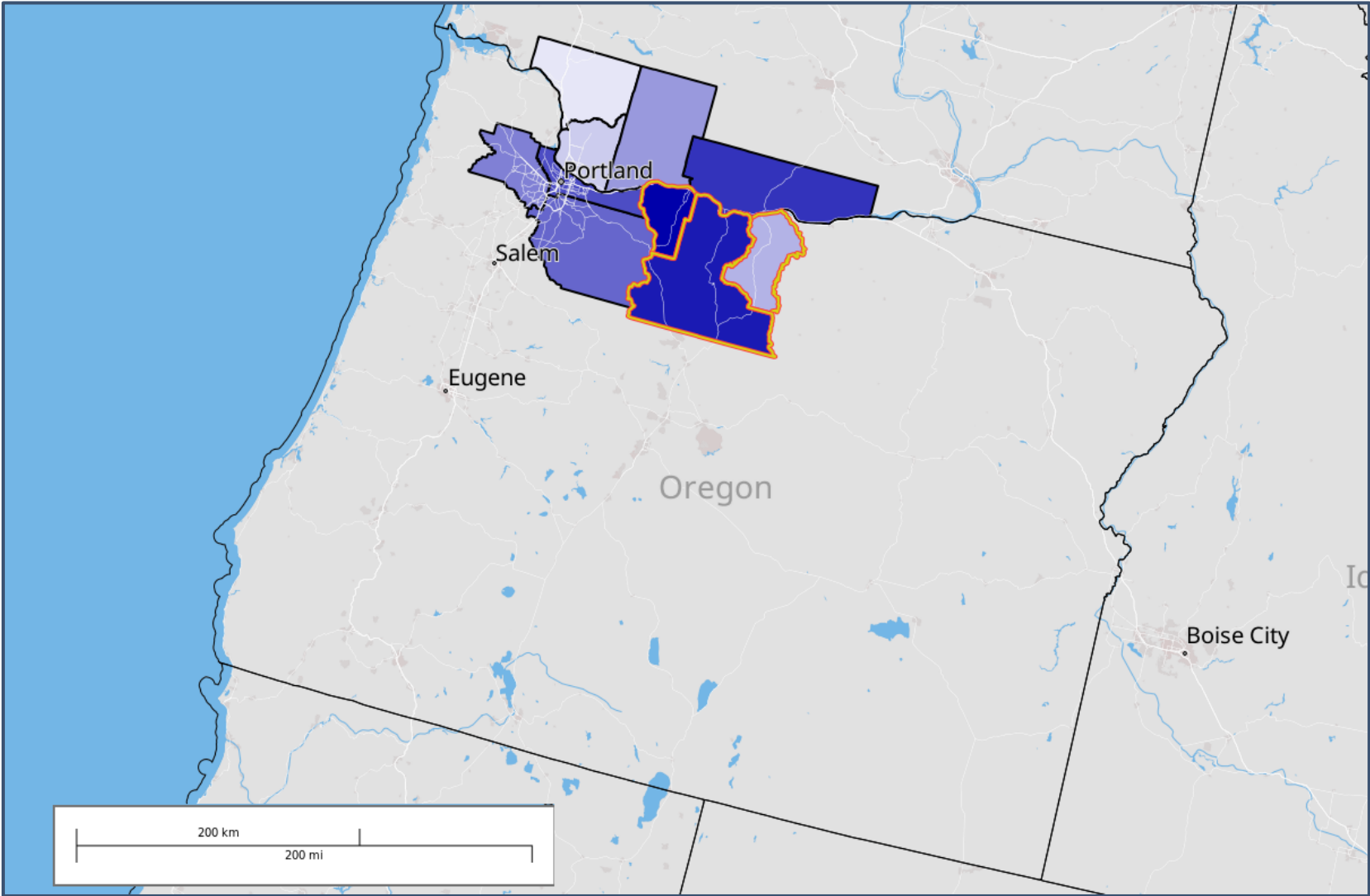
# JOB COUNTS BY COUNTIES WHERE COLUMBIA GORGE RESIDENTS ARE EMPLOYED



Where Columbia Gorge Residents Work  
(Outflow)

2022			
		Count	Share
<b>All Counties</b>		<b>22,570</b>	<b>100.00%</b>
Hood River	OR	7,860	34.80%
Wasco	OR	5,761	25.50%
Multnomah	OR	1,889	8.40%
Clackamas	OR	971	4.30%
Klickitat	WA	797	3.50%
Washington	OR	649	2.90%
Deschutes	OR	555	2.50%
Marion	OR	536	2.40%
Sherman	OR	378	1.70%
Umatilla	OR	305	1.40%
<b>All Other Locations</b>	<b>All</b>	<b>2,869</b>	<b>12.70%</b>

# JOB COUNTS BY COUNTIES WHERE COLUMBIA GORGE WORKERS LIVE

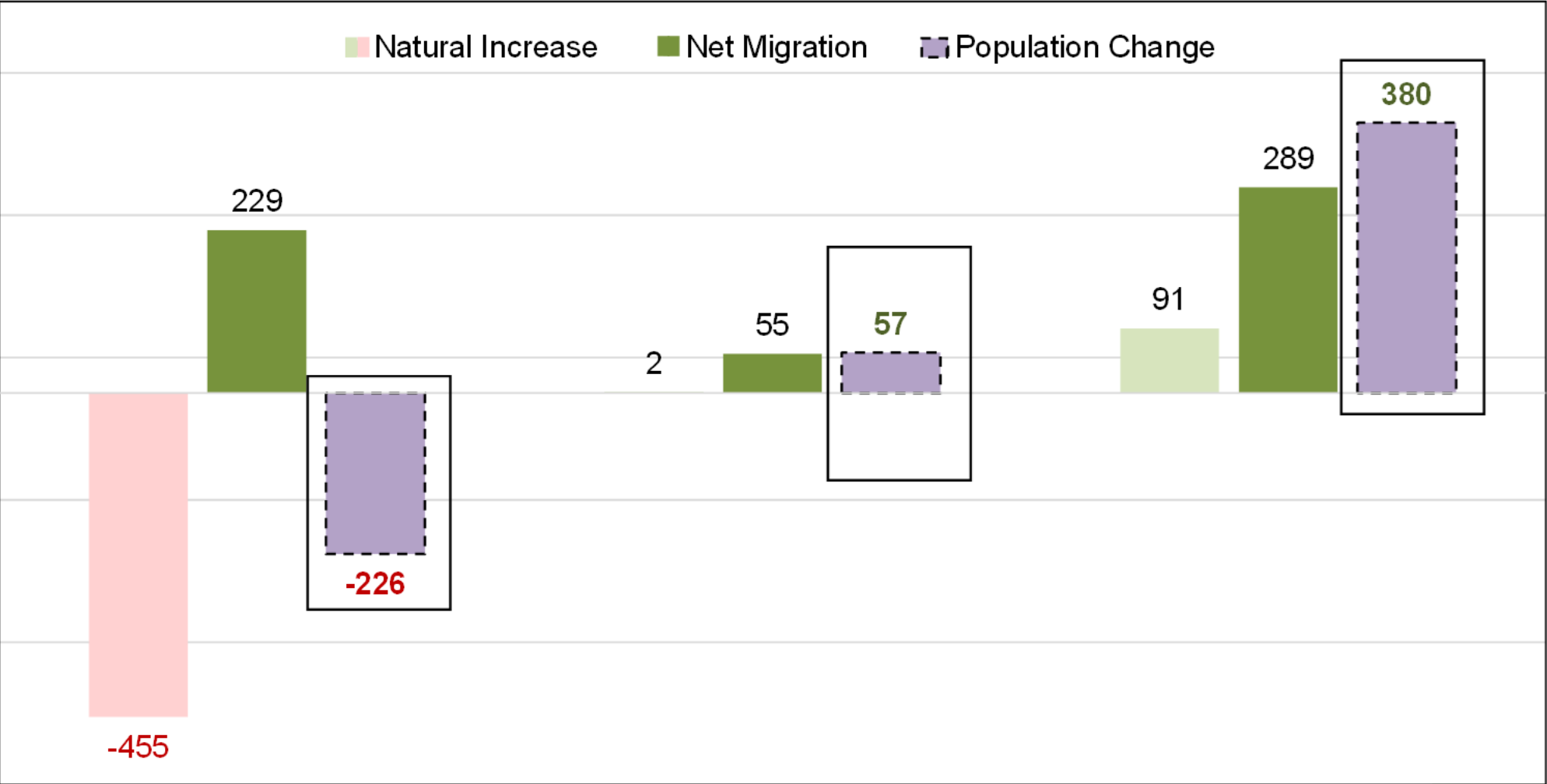


Where Columbia Gorge Workers Live  
(Inflow)

2022			
		Count	Share
<b>All Counties</b>		<b>21,407</b>	<b>100.00%</b>
Hood River	OR	7,203	33.60%
Wasco	OR	6,436	30.10%
Klickitat	WA	1,233	5.80%
Multnomah	OR	907	4.20%
Clackamas	OR	629	2.90%
Washington	OR	464	2.20%
Skamania	WA	373	1.70%
Sherman	OR	360	1.70%
Clark	WA	316	1.50%
Cowlitz	WA	292	1.40%
<b>All Other Locations</b>	<b>All</b>	<b>3,194</b>	<b>14.90%</b>



Columbia Gorge Population Growth: April 2020 to July 2024



WASCO

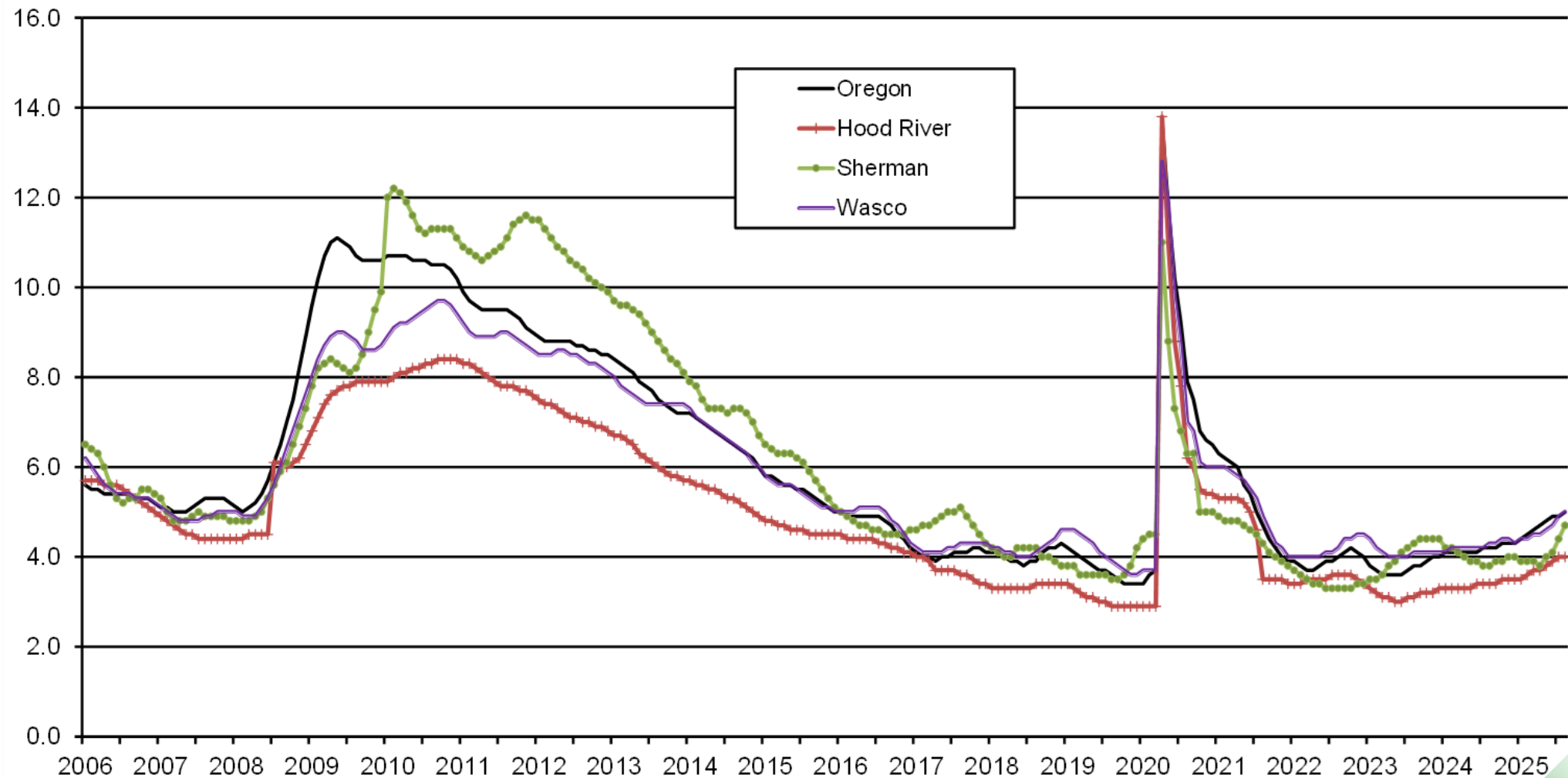
SHERMAN

HOOD RIVER

# UNEMPLOYMENT RATE AND TOTAL NONFARM JOBS

# SA MONTHLY UNEMPLOYMENT RATES, JANUARY 2006 - AUGUST 2025

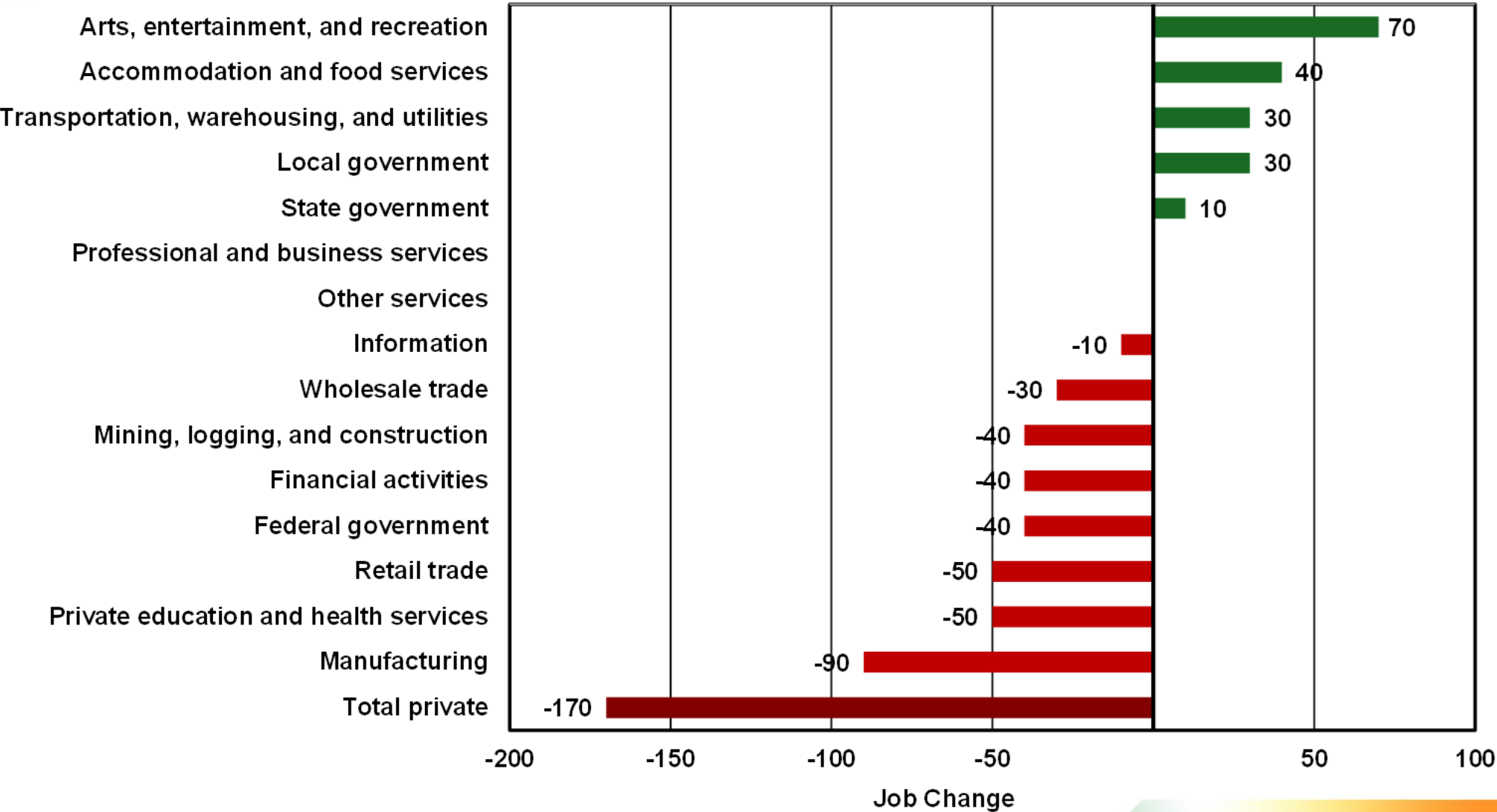
Seasonally Adjusted Monthly Unemployment Rates: 2006 - August 2025



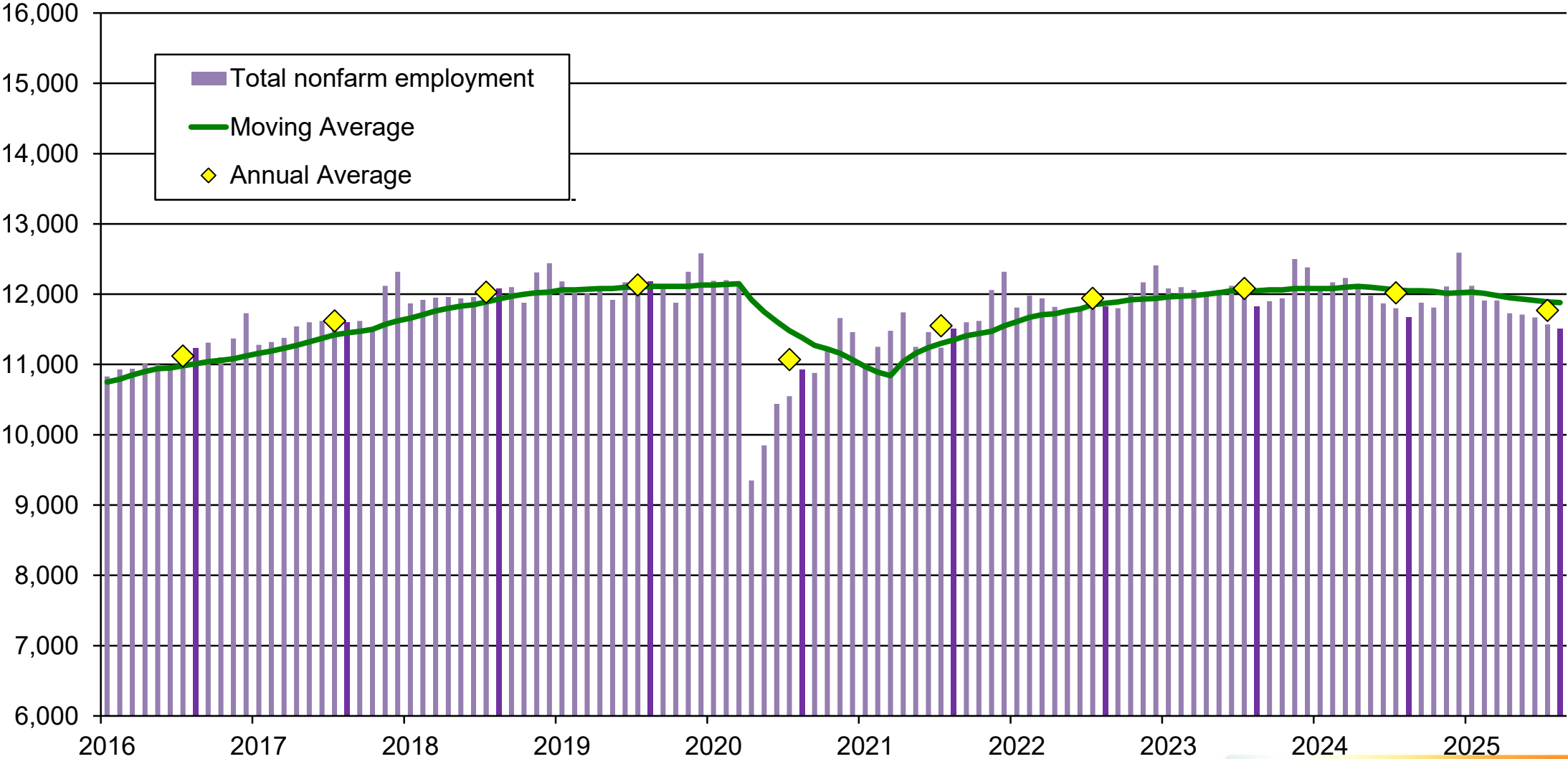
TOTAL NONFARM EMPLOYMENT DOWN 160 Y.O.Y.

# Hood River County Job Change Over The Year

## August 2024 - August 2025 Job Change



Hood River County Total Nonfarm Employment, Jan. 2016 - Aug. 2025

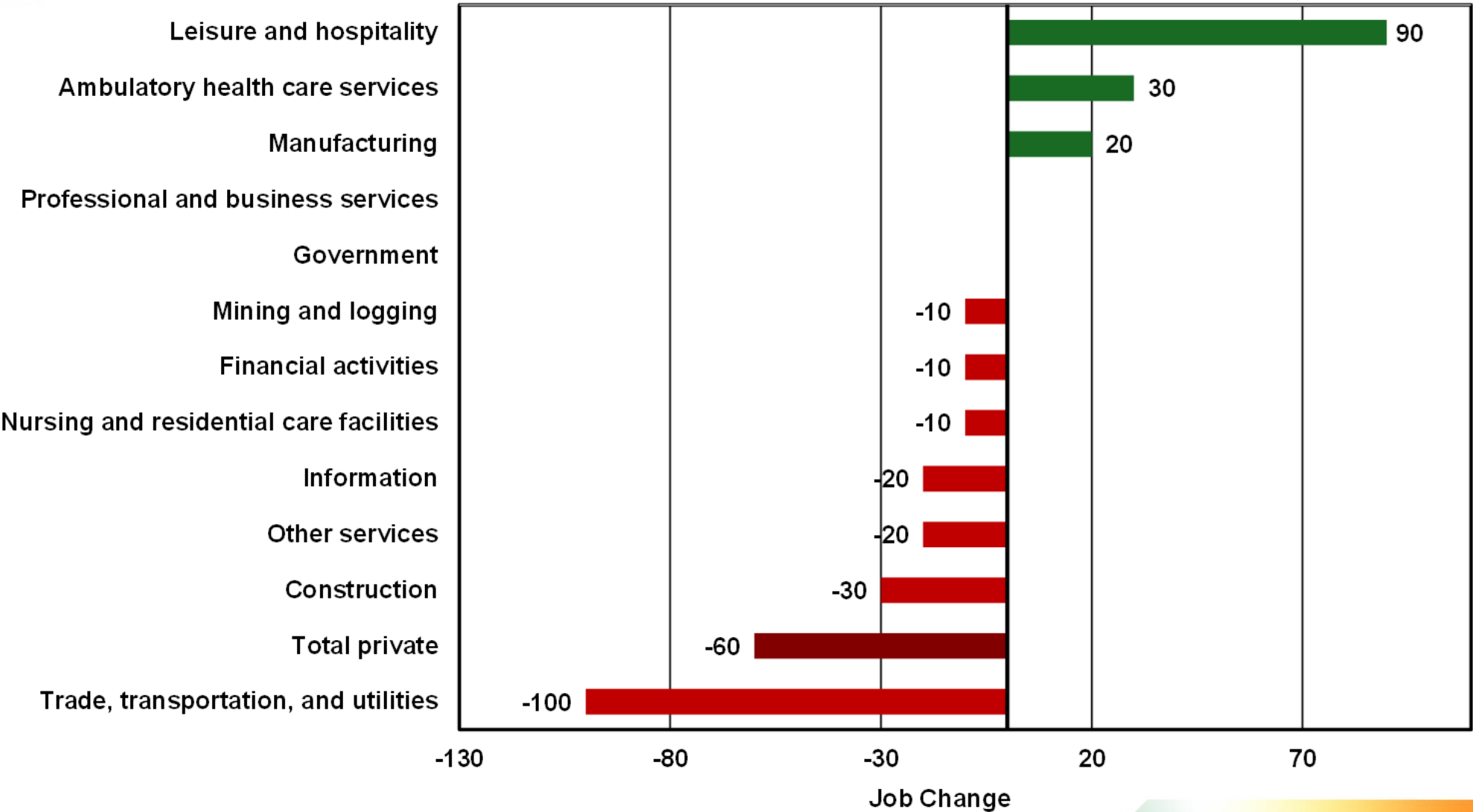


Source: Oregon Employment Department, Current Employment Statistics (CES)

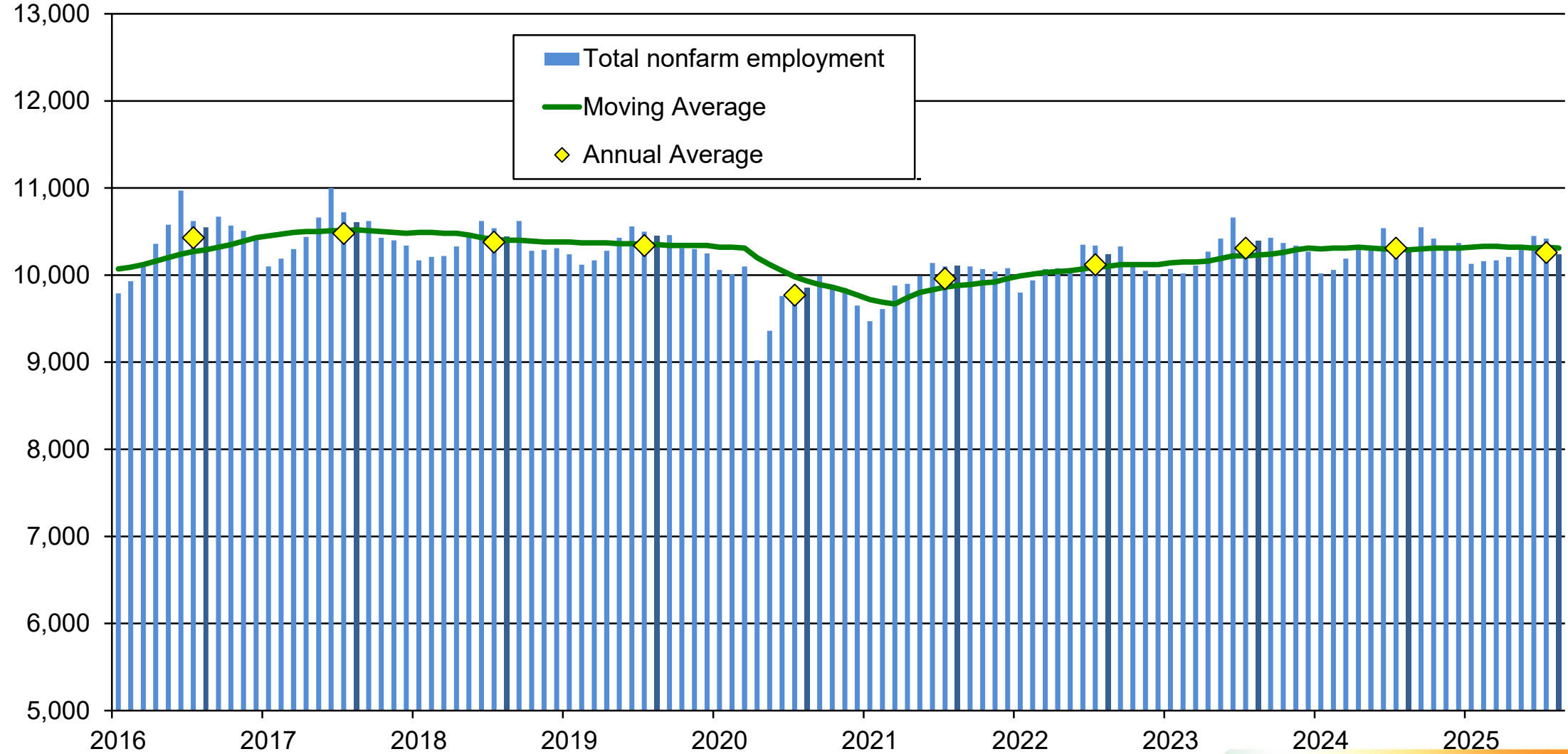
TOTAL NONFARM EMPLOYMENT DOWN 60 Y.O.Y.

# Wasco County Job Change Over The Year

## August 2024 - August 2025 Job Change

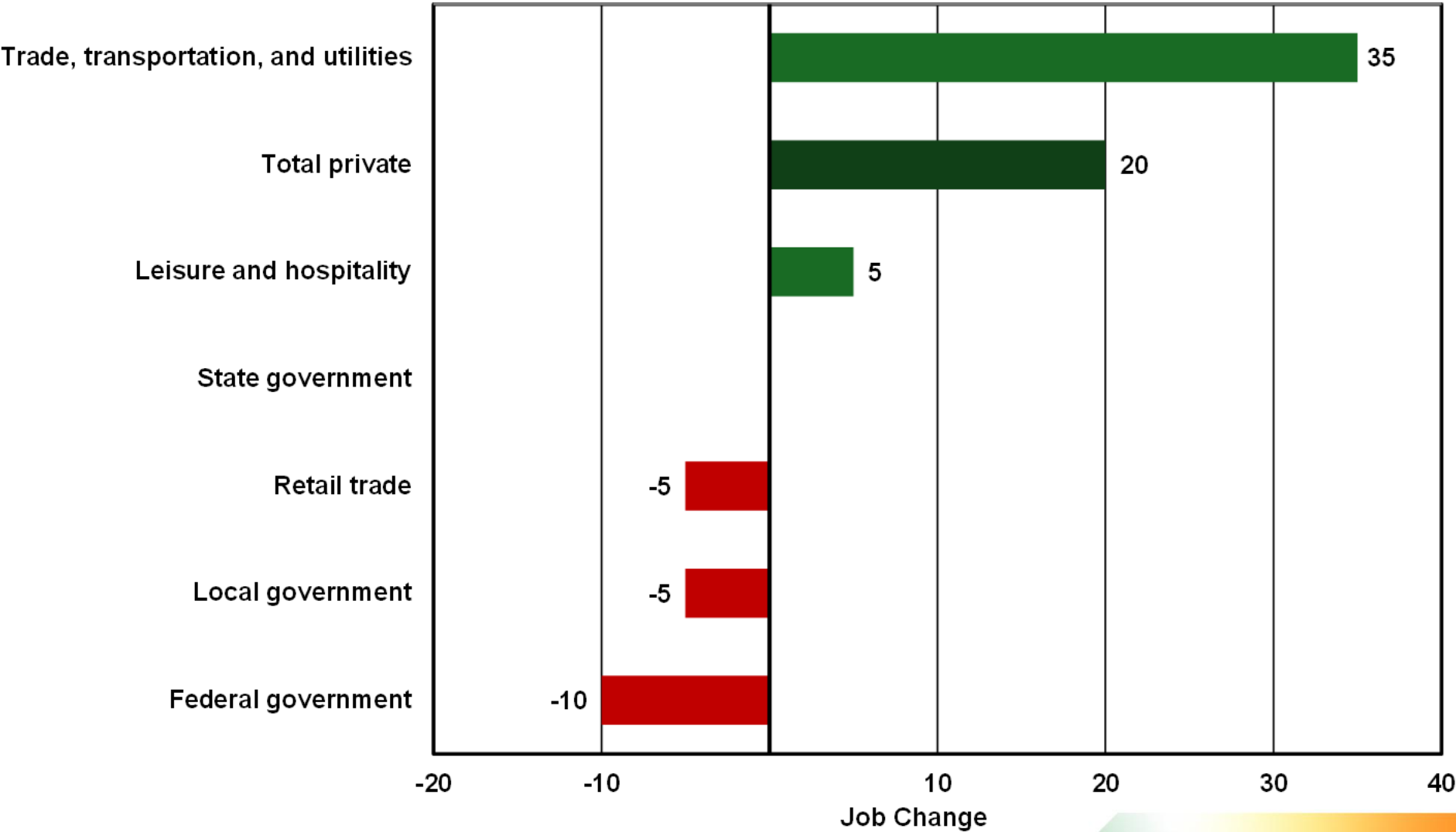


Wasco County Total Nonfarm Employment, Jan. 2016 - Aug. 2025



# Sherman County Job Change Over The Year

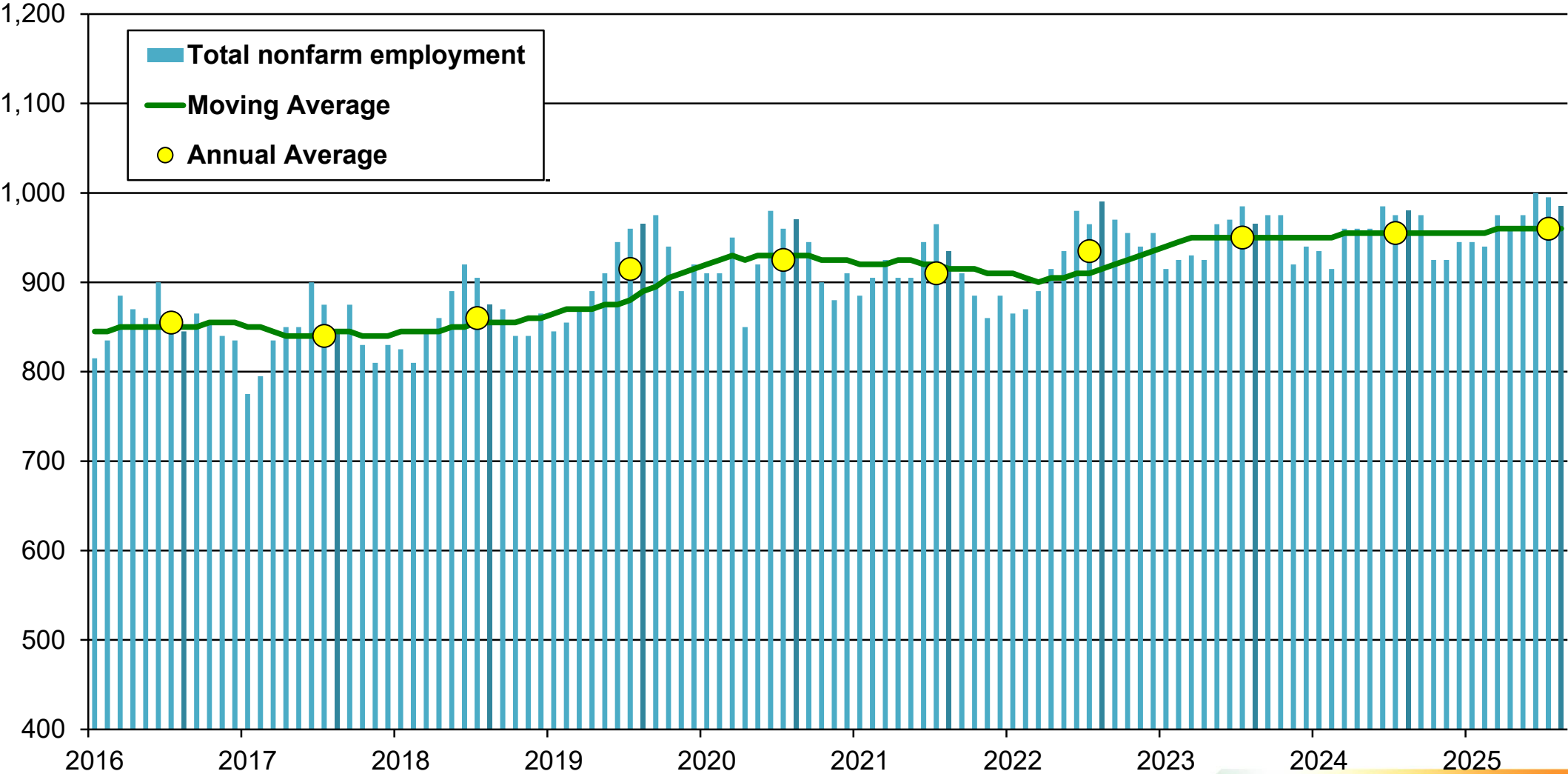
August 2024 - August 2025 Job Change



16



Sherman County Total Nonfarm Employment, Jan. 2016 - Aug. 2025



# COVERED INDUSTRY EMPLOYMENT AND PAYROLL

## Hood River County 2024 Covered Employment and Payroll

Industry	Jobs	Payroll	Average Wage	Over-The-Year Change			
				GrowthPercent		GrowthPercent	
				Employment		Payroll	
Total All Ownerships	13,815	\$720,971,555	\$52,188	-163	-1.2%	\$8,745,015	1.2%
Total Private Coverage	12,409	\$627,887,953	\$50,599	-69	-0.6%	\$2,666,473	0.4%
Natural Resources and Mining	2,103	\$71,740,545	\$34,113	43	2.0%	-\$1,794,569	-2.5%
Construction	517	\$32,697,735	\$63,245	23	4.4%	\$885,791	2.7%
Manufacturing	1,736	\$101,113,789	\$58,245	-83	-4.8%	-\$1,984,267	-2.0%
Trade, Transportation and Utilities	2,013	\$97,351,911	\$48,362	-118	-5.9%	\$4,082,818	4.2%
Wholesale Trade	405	\$34,229,547	\$84,517	-78	-19.3%	\$2,495,488	7.3%
Retail Trade	1,463	\$52,684,547	\$36,011	-22	-1.5%	\$1,263,172	2.4%
Transportation, Warehousing & Utilities	145	\$10,437,817	\$71,985	-18	-12.4%	\$324,158	3.1%
Information	101	\$10,573,364	\$104,687	-33	-32.7%	-\$2,013,819	-19.0%
Financial Activities	238	\$15,515,253	\$65,190	22	9.2%	\$1,066,246	6.9%
Professional and Business Services	948	\$89,547,527	\$94,459	-71	-7.5%	-\$5,615,400	-6.3%
Professional, Scientific, and Technical Services	762	\$79,609,193	\$104,474	-71	-9.3%	-\$5,484,408	-6.9%
Education and Health Services	1,977	\$121,160,777	\$61,285	66	3.3%	\$5,155,594	4.3%
Leisure and Hospitality	2,457	\$74,110,896	\$30,163	130	5.3%	\$2,718,761	3.7%
Other Services	317	\$13,756,080	\$43,395	-48	-15.1%	\$801,847	5.8%
Total All Government	1,406	\$93,083,602	\$66,205	82	5.8%	\$6,078,542	6.5%
Total Federal Government	138	\$11,672,883	\$84,586	17	12.3%	\$2,145,978	18.4%
Total State Government	120	\$8,476,242	\$70,635	30	25.0%	\$613,664	7.2%
Total Local Government	1,147	\$72,934,477	\$63,587	33	2.9%	\$3,318,900	4.6%

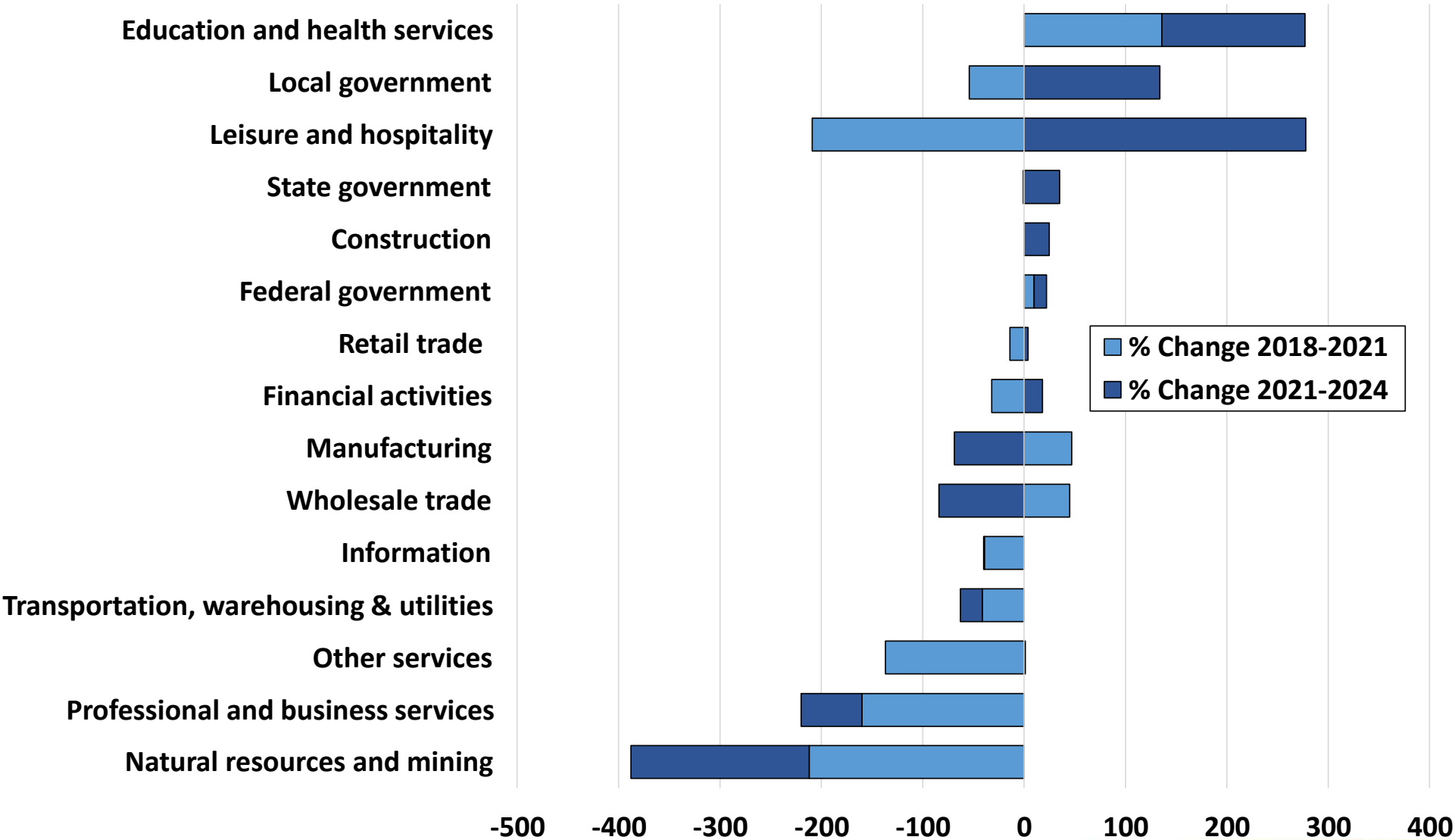
## Wasco County 2024 Covered Employment and Payroll

				Over-The-Year Change			
				Growth Percent		Growth Percent	
Industry	Jobs	Payroll	Annual Average	Employment		Payroll	
Total all ownerships	11,501	\$652,080,019	\$56,698	95	0.8%	\$46,779,137	7.2%
Total private coverage	9,360	\$501,085,903	\$53,535	-4	0.0%	\$32,854,167	6.6%
Natural resources and mining	1,411	\$49,284,695	\$34,929	83	5.9%	\$4,434,182	9.0%
Construction	444	\$31,888,590	\$71,821	25	5.6%	\$6,351,480	19.9%
Manufacturing	467	\$30,975,686	\$66,329	-26	-5.6%	\$2,491,886	8.0%
Trade, transportation and utilities	2,039	\$91,884,204	\$45,063	-33	-1.6%	\$3,419,785	3.7%
Wholesale trade	191	\$10,834,240	\$56,724	6	3.1%	\$587,439	5.4%
Retail trade	1,582	\$62,561,641	\$39,546	-17	-1.1%	\$2,287,754	3.7%
Transportation, warehousing & utilities	266	\$18,488,323	\$69,505	-22	-8.3%	\$544,592	2.9%
Information	268	\$62,229,485	\$232,200	-2	-0.7%	\$1,300,605	2.1%
Financial activities	211	\$12,037,690	\$57,051	-26	-12.3%	-\$916,005	-7.6%
Professional and business services	582	\$36,541,267	\$62,786	-2	-0.3%	-\$782,523	-2.1%
Professional, scientific, and technical service	245	\$18,437,311	\$75,254	-14	-5.7%	-\$1,012,378	-5.5%
Education and health services	2,232	\$136,978,156	\$61,370	-2	-0.1%	\$16,061,142	11.7%
Leisure and hospitality	1,330	\$35,289,727	\$26,534	-26	-2.0%	\$312,449	0.9%
Other services	374	\$13,898,146	\$37,161	6	1.6%	\$601,194	4.3%
Total all government	2,141	\$150,994,116	\$70,525	99	4.6%	\$13,924,970	9.2%
Total federal government	290	\$33,569,129	\$115,756	11	3.8%	\$3,874,011	11.5%
Total state government	295	\$22,680,442	\$76,883	21	7.1%	\$2,645,350	11.7%
Total local government	1,557	\$94,744,545	\$60,851	68	4.4%	\$7,405,609	7.8%

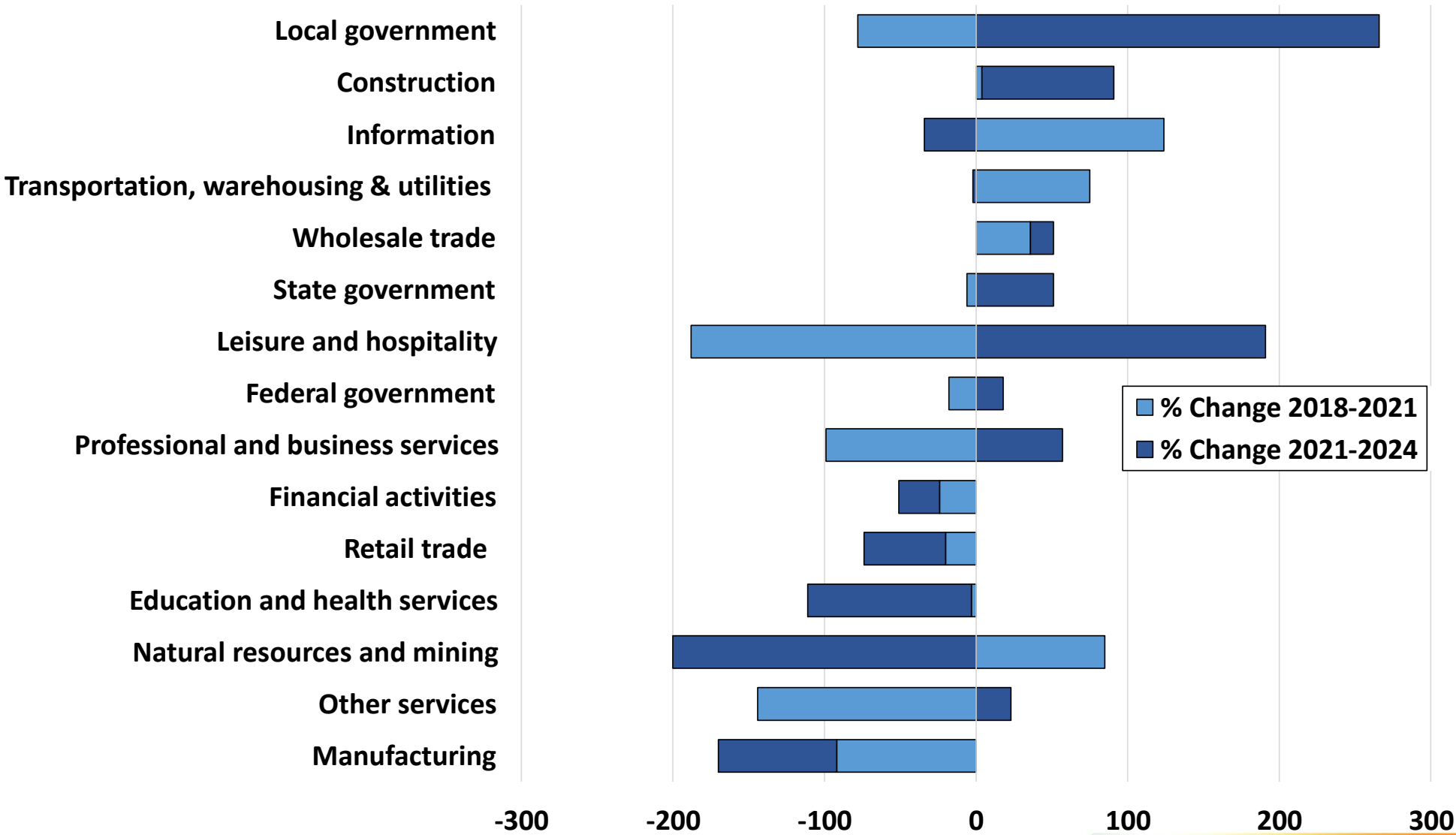
Sherman County 2024 Covered Employment and Payroll				Over-The-Year Change			
				Growth Percent		Growth	Percent
Industry	Jobs	Payroll	Average Wage	Employment		Payroll	
Total all ownerships	965	\$62,825,326	\$65,104	14	1.5%	\$4,979,483	7.9%
Total private coverage	658	\$37,792,852	\$57,436	-2	-0.3%	\$1,608,560	4.3%
Natural resources and mining	29	\$1,421,584	\$49,020	3	10.3%	\$95,865	6.7%
Construction	66	\$6,707,281	\$101,625	-7	-10.6%	-\$206,831	-3.1%
Trade, transportation and utilit	360	\$20,006,843	\$55,575	15	4.2%	\$2,465,585	12.3%
Professional and business ser	18	\$1,571,783	\$87,321	-2	-11.1%	-\$245,482	-15.6%
Education and health services	20	\$377,254	\$18,863	-2	-10.0%	-\$24,789	-6.6%
Leisure and hospitality	88	\$2,656,387	\$30,186	-8	-9.1%	-\$128,138	-4.8%
Other services	23	\$1,512,992	\$65,782	-3	-13.0%	-\$180,586	-11.9%
Total all government	307	\$25,032,474	\$81,539	16	5.2%	\$3,370,923	13.5%
Total federal government	138	\$16,875,366	\$122,285	9	6.5%	\$2,616,306	15.5%
Total state government	21	\$1,627,649	\$77,507	-1	-4.8%	\$143,547	8.8%
Total local government	148	\$6,529,459	\$44,118	8	5.4%	\$611,070	9.4%



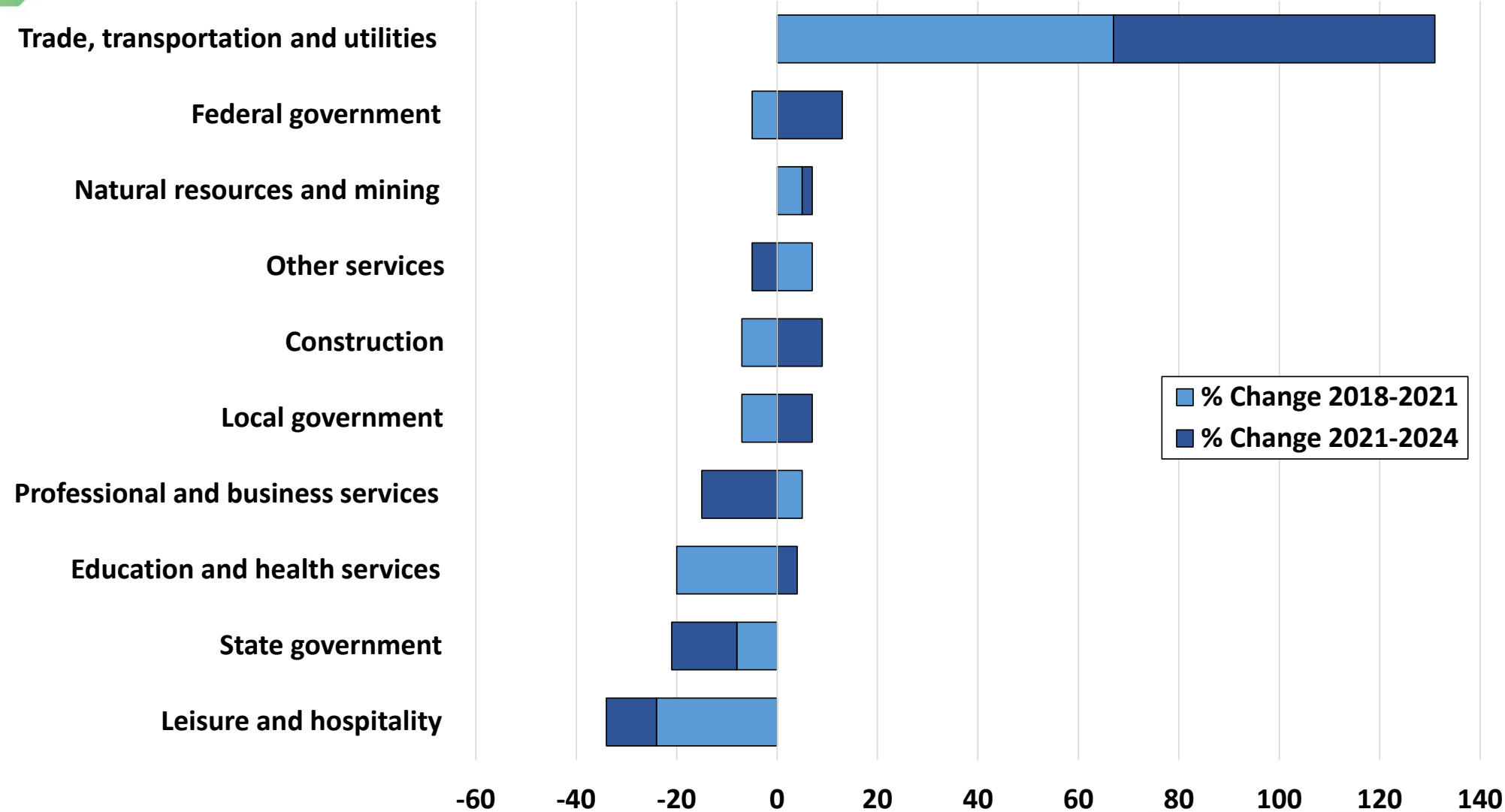
Hood River County Job Growth by Industry 2018 -2024



Wasco County Job Growth by Industry 2018-2024



# Sherman County Job Growth by Industry 2018-2024





# Thank You!

*Please scan the QR code for a short survey.*



**NICOLE S. RAMOS, REGIONAL ECONOMIST**  
**NICOLE.S.RAMOS@EMPLOY.OREGON.GOV**

**SIGN UP FOR THE LATEST WORKFORCE AND ECONOMIC RESEARCH**  
**[WWW.QUALITYINFO.ORG/SUBSCRIBE](http://WWW.QUALITYINFO.ORG/SUBSCRIBE)**